

Thanks for choosing Seminole Blueprint!
In Tallahassee's architectural, construction and engineering community, Seminole Blueprint strives to be a leader in the blueprint copying & scanning sector by providing fair prices with exceptional quality and customer service.

To accomplish this goal, Seminole Blueprint understands the importance of maintaining a good professional relationship with each client through honesty and integrity in all aspects of business.

Seminole Blueprint
2915-1 East Park Avenue
Tallahassee, FL 32301
850.671.2714

www.seminoleblueprintinc.com

STUDENT PAMPHLET

Accommodating Tallahassee area students with all their printing needs. We even have special student pricing!

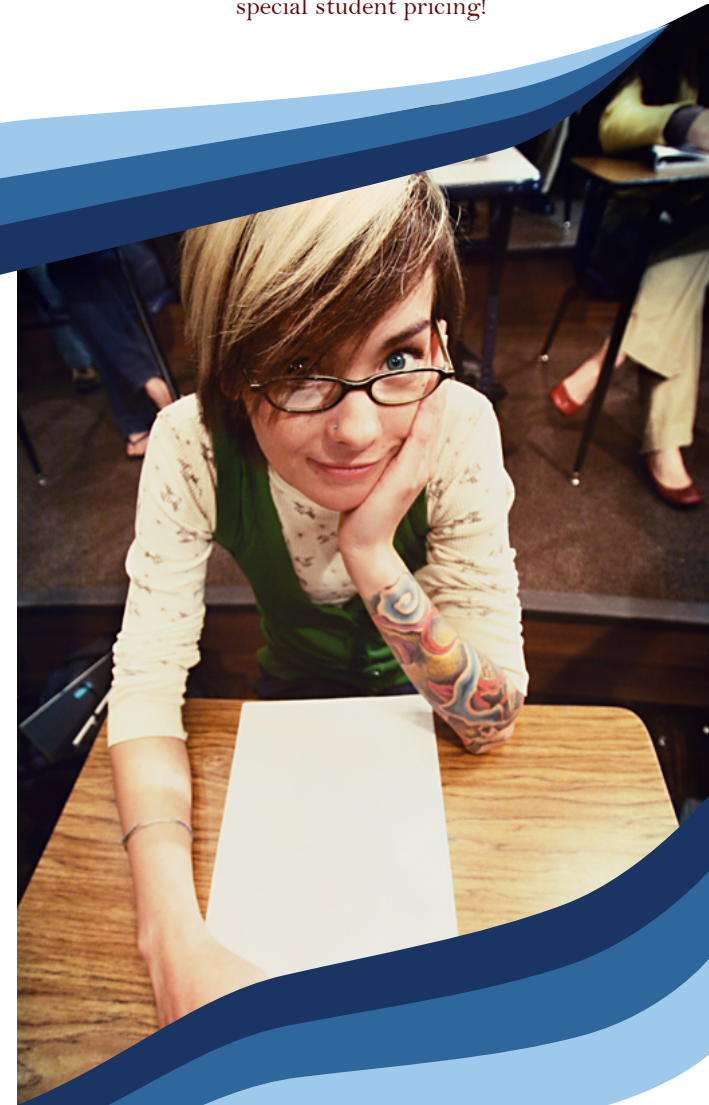



To get you in and out
as soon as possible, please read through this and
follow our suggestions. That way, your hard work
will be ready for you fast and looking fabulous,
earning you an A+

Schools of:
Architecture
Engineering
Fine - Studio Art
Interior Design
& all printing needs



Open Monday-Friday
8:30 - 5:30




SEMINOLEBLUEPRINT
BLUEPRINTS & BEYOND...

Your files can only be printed if:

(choose from the following)

- brought to us on a USB Jump Drive
- emailed with directions
- uploaded to our FTP site.

(Please call or email with directions if uploading)

The only file extensions that are accepted:

.dwf .psd .pdf

.tiff .jpeg

or Microsoft Office files

(2005 .dwg can be printed at additional charge if all info is included)

A little common courtesy will speed up the process. We know you're stressed and we'll work as fast as we can.



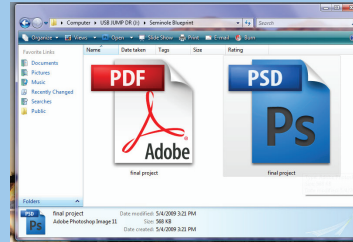
Helpful Hints:

Remember, it's first come first served. We cannot allow you to skip ahead in the line if there are other customers before you.

Try not to plan to print at the last minute. We cannot promise we will get it to you on time and it may result in a missed deadline!

Make room for other customers please!

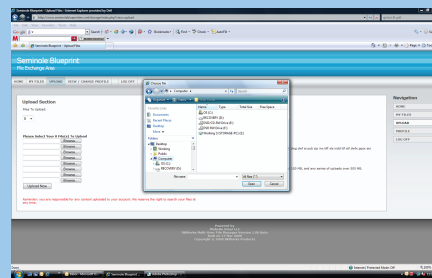
Stay out front unless invited to the back, we're busy back here!



On your USB Jump Drive,
have a folder named *Seminole Blueprint*

In the named folder have:
2 different types of the same file you wish to have printed (the original native file and a .pdf)

Have all of your files saved to the desired scale



Uploading to our FTP site:

Step 1:
Go to www.seminoleblueprintinc.com and click Upload Plans

Step 2:
Log on with a username and password
(You can also use the Username: student, Password: student instead of creating your own personal account)

Step 3:
Click the Upload link

Step 4:
Specify the number of files to upload and browse to each file individually.
(You may also save as a .zip and upload one single file)

Step 5:
After you have successfully uploaded your files, please notify us at 850-671-2714 or email at info@seminoleblueprintinc.com to confirm receipt and give instructions.

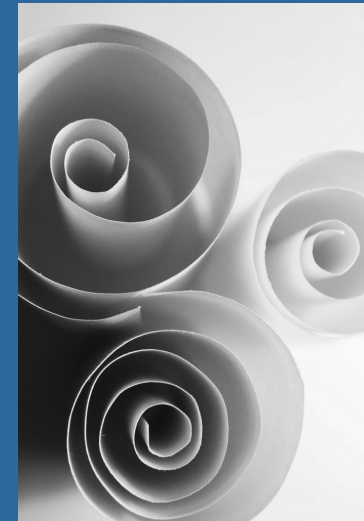
We will not know that you have uploaded files unless you contact us.

We will not start printing until we are notified with the directions.

Plans uploaded at night with proper instructions are given priority over walk-ins.

Services

As a student, your professors require countless projects throughout the semester. We have many types of services to fit your needs: paper size, paper type, color or B&W ink, mounted or bound.



Large Format Color/B&W Copies

B&W can be print up to 42" on bond paper.

Color can be printed up to 60" on photo quality paper, 42" on bond.

Regular Color/B&W Copies

Copies up to 12x18 can be printed on a variety of papers on our regular copiers.

Prints can be double sided and full bleed.

Scanning

We can scan up to 36" in color and B&W

Files can be saved in .tiff .pdf. or .jpg

Finishing

We offer GBC, coil, comb, tape, and screw post binding options.

Presentations can be mounted on white or black foam board up to 40"x60".

We offer lamination in 3, 5, or 10 mil up to 36"